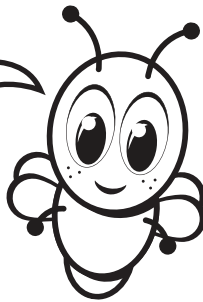


Blinky's Family Challenge

I'll show super-de-dooper faith in God by ... *choosing to love and being kind!*



Faith or Fool

When we're kind and loving to leaders, we show faith in God. When we disobey and act yucky, we don't have faith in God, and we're a fool. Play a game to practice kindness and love.

Directions

1. Say a choice from the **Faith or Fool List**.
2. If it's kind and loving, hug yourself and everyone else, and say, "Faith!"
3. If it's disobedient or yucky, fall over, roll around, and say, "Fool!"

Faith or Fool List

- Obey right away
- Yell, "No!"
- Throw a fit
- Listen
- Pray to God

Review Time!

Say With Me Ages 2-3

1. *Say Together:* I have faith in God!
2. *Say Together:* I'll obey my leaders!

Q&A Ages 4-Kindergarten

1. Name some actions that show faith. **See "Faith or Fool List"**
2. What is a fool? **Someone who does not have faith in God**

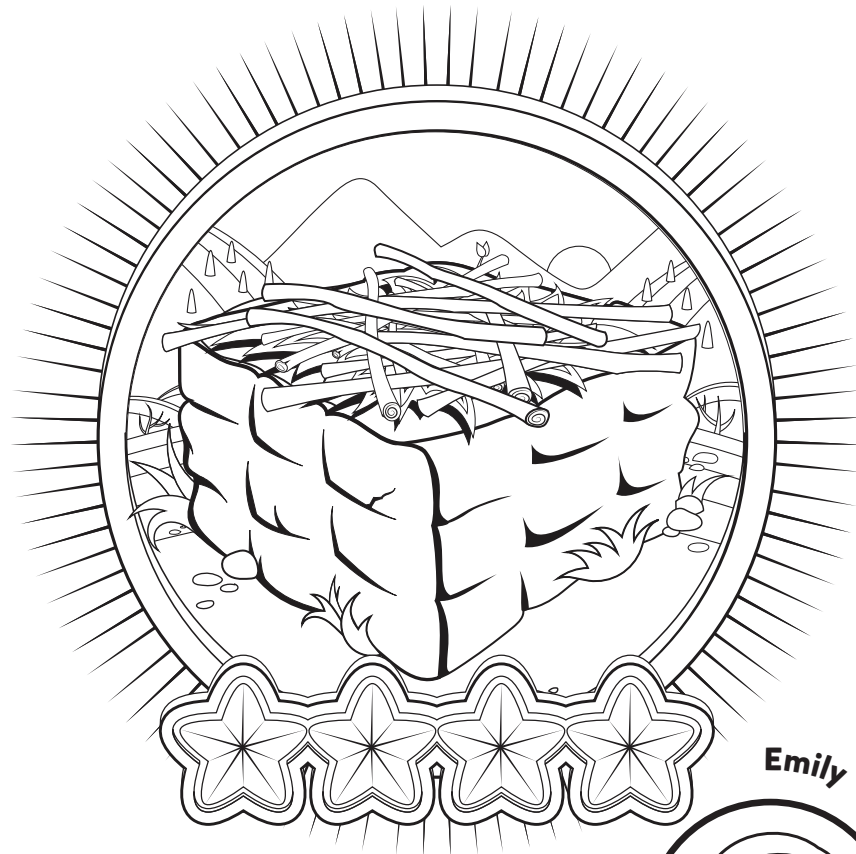


Lead your family through the Bible plan *Abraham's Big Test* on the YouVersion Bible App. www.bible.com

Abraham's Big Test

Abraham and Isaac

Week Four

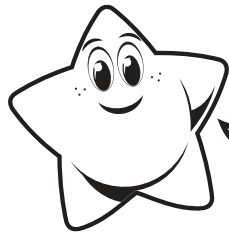


Emily

Tell your family what's in my Adventure Bag!



Interact with Bible stories on the Bible App for Kids!
www.bible.com/kids



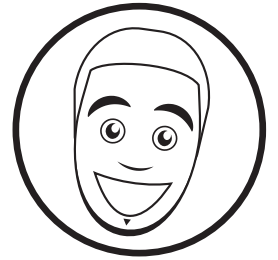
Question: Hey friends! How do you show faith?

Emily



Answer: Say it with me!
*I show faith every day,
When I trust and obey.*

Say the Verse with me!



I can wait patiently, even if it takes a long time.

Put a jewel sticker on the clock!

